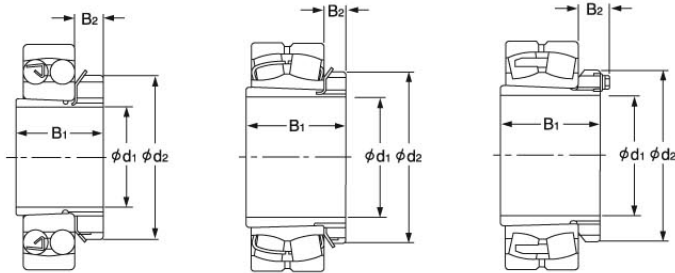
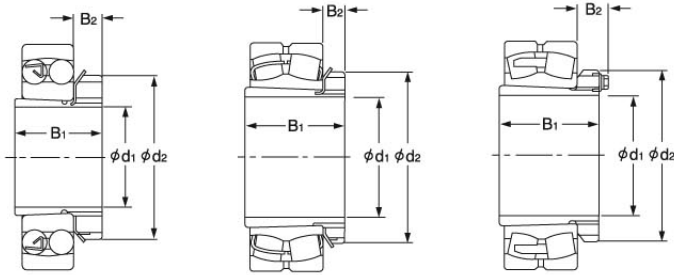


10.1 Adapter Sleeves



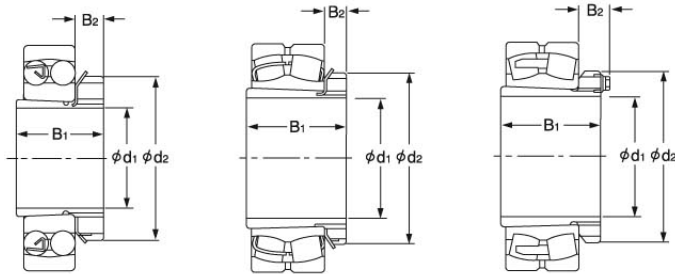
Dimension			Number	Mass
d1	d	B		
mm	mm	mm		kg
17	20	24	H 204	0.04
20	25	26	H 205	0.06
25	30	27	H 206	0.09
30	35	29	H 207	0.12
35	40	31	H 208	0.16
40	45	33	H 209	0.21
45	50	35	H 210	0.24
50	55	37	H 211	0.28
55	60	38	H 212	0.31
60	65	40	H 213	0.36
60	70	41	H 214	0.59
65	75	43	H 215	0.66
70	80	46	H 216	0.81
75	85	50	H 217	0.94
80	90	52	H 218	1.10
85	95	55	H 219	1.25
90	100	58	H 220	1.40
100	110	63	H 222	1.80
17	20	28	H 304	0.04
20	25	29	H 305	0.07
25	30	31	H 306	0.10
30	35	35	H 307	0.14
35	40	36	H 308	0.17
40	45	39	H 309	0.23
45	50	42	H 310	0.27
50	55	45	H 311	0.32
55	60	47	H 312	0.36
60	65	50	H 313	0.42
60	70	52	H 314	0.67
65	75	55	H 315	0.78

10.1 Adapter Sleeves



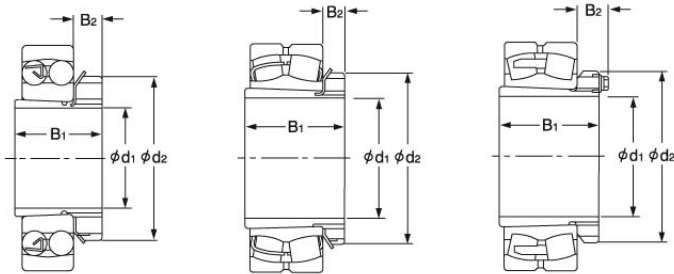
Dimension			Number	Mass
d1	d	B		
mm	mm	mm		kg
70	80	59	H 316	0.95
75	85	63	H 317	1.10
80	90	65	H 318	1.30
85	95	68	H 319	1.40
90	100	71	H 320	1.60
100	110	77	H 322	2.05
25	30	38	H 2306	0.11
30	35	43	H 2307	0.16
35	40	46	H 2308	0.22
40	45	50	H 2309	0.27
45	50	55	H 2310	0.34
50	55	59	H 2311	0.39
55	60	62	H 2312	0.45
60	65	65	H 2313	0.52
60	70	68	H 2314	0.88
65	75	73	H 2315	1.10
70	80	78	H 2316	1.20
75	85	82	H 2317	1.35
80	90	86	H 2318	1.60
85	95	90	H 2319	1.80
90	100	97	H 2320	2.00
100	110	105	H 2322	2.75

10.1 Adapter Sleeves (Inch Series)



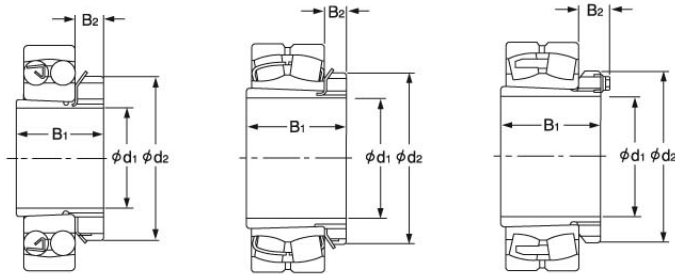
Dimension				Number	Mass
d1		d	B		
mm	Inch	mm	mm		kg
19	3/4	25	26	HE 205	0.07
25	1	30	27	HE 206	0.08
32	1 1/4	40	31	HE 208	0.19
38	1 1/2	45	33	HE 209	0.22
44	1 3/4	50	35	HE 210	0.25
51	2	55	37	HE 211	0.25
57	2 1/4	65	85	HE 213	0.40
63	2 1/2	75	43	HE 215	0.69
70	2 3/4	80	46	HE 216	0.79
76	3	85	50	HE 217	0.87
83	3 1/4	90	52	HE 218	0.95
83	3 1/4	95	55	HE 219	1.32
89	3 1/2	100	58	HE 220	1.42
102	4	110	63	HE 222	1.60
19	3/4	25	29	HE 305	0.08
25	1	30	31	HE 306	0.11
32	1 1/4	40	36	HE 308	0.17
38	1 1/2	45	39	HE 309	0.22
44	1 3/4	50	42	HE 310	0.29
51	2	55	45	HE 311	0.28
57	2 1/4	65	50	HE 313	0.49
64	2 1/2	75	55	HE 315	0.83
70	2 3/4	80	59	HE 316	0.95
76	3	85	63	HE 317	1.18
83	3 1/4	90	65	HE 318	1.09
83	3 1/4	95	68	HE 319	1.56
89	3 1/2	100	71	HE 320	1.69
102	4	110	77	HE 322	1.87
19	3/4	25	35	HE 2305	0.09
25	1	30	38	HE 2306	0.11
32	1 1/4	40	46	HE 2308	0.26
38	1 1/2	45	50	HE 2309	0.28
44	1 3/4	50	55	HE 2310	0.36
51	2	55	59	HE 2311	0.35
57	2 1/4	65	65	HE 2313	0.62

10.1 Adapter Sleeves (Inch Series)



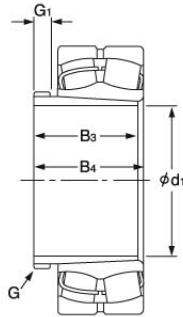
Dimension				Number	Mass
d1		d	B		
mm	Inch	mm	mm		kg
64	2 1/2	75	73	HE 2315	1.05
70	2 3/4	80	78	HE 2316	1.18
76	3	85	82	HE 2317	1.45
83	3 1/4	90	86	HE 2318	1.38
83	3 1/4	95	90	HE 2319	1.94
89	3 1/2	100	97	HE 2320	2.15
102	4	110	105	HE 2322	2.35
22	7/8	30	27	HS 206	0.10
29	1 1/8	35	35	HS 206	0.13
35	1 3/8	40	31	HS 208	0.16
41	1 5/8	50	35	HS 208	0.31
48	1 7/8	55	37	HS 211	0.33
54	2 1/8	60	38	HS 212	0.35
60	2 3/8	65	40	HS 213	0.44
67	2 5/8	75	43	HS 215	0.66
22	7/8	30	31	HS 306	0.11
29	1 1/8	35	35	HS 307	0.16
35	1 3/8	40	36	HS 308	0.19
41	1 5/8	50	42	HS 310	0.30
48	1 7/8	55	45	HS 311	0.38
54	2 1/8	60	47	HS 312	0.40
60	2 3/8	65	50	HS 313	0.71
67	2 5/8	75	55	HS 315	0.71
24	15 / 16	30	27	HA 206	0.10
30	1.3 / 16	35	29	HA 207	0.13
37	1.7 / 16	45	33	HA 209	0.23
43	1.11 / 16	50	35	HA 210	0.27
49	1.15 / 16	55	37	HA 211	0.31
56	2.3 / 16	65	40	HA 213	0.49
62	2.7 / 16	75	43	HA 215	0.75
68	2.11 / 16	80	46	HA 216	0.88
75	2.15 / 16	85	50	HA 217	1.02
81	3.3 / 16	90	52	HA 218	1.05
87	3.7 / 16	100	58	HA 220	1.55
24	15 / 16	30	31	HA 306	0.11

10.1 Adapter Sleeves (Inch Series)



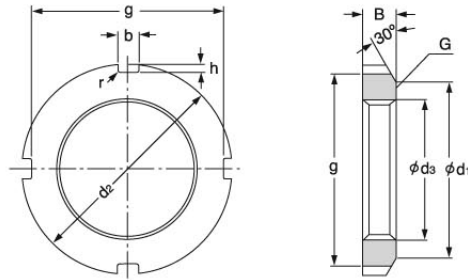
Dimension				Number	Mass
d1	d	B			
mm	Inch	mm	mm		kg
30	1.3/16	35	35	HA 307	0.14
37	1.7/16	46	39	HA 309	0.25
43	1.11/16	50	42	HA 310	0.32
49	1.15/16	55	45	HA 311	0.35
56	2.3/16	65	50	HA 313	0.58
62	2.7/16	98	55	HA 315	0.91
68	2.11/16	80	59	HA 316	1.05
75	2.15/16	85	63	HA 317	1.10
77	3.3/16	120	65	HA 318	1.35
87	3.7/16	100	71	HA 320	1.80
24	15 / 16	30	38	HA 2306	0.13
30	1.3/16	35	43	HA 2307	0.17
37	1.7/16	45	50	HA 2309	0.28
43	1.11/16	50	55	HA 2310	0.32
49	1.15/16	55	59	HA 2311	0.42
56	2.3/16	65	65	HA 2313	0.75
62	2.7/16	75	73	HA 2315	1.15
68	2.11/16	80	78	HA 2316	1.30
75	2.15/16	85	82	HA 2317	1.40
81	3.3/16	90	86	HA 2318	1.50
87	3.7/16	100	97	HA 2320	2.35
106	4.3/16	120	112	HA 2320	3.60
106	4.3/16	120	112	HA 2320	3.30
89	3.1/2	100	76	HE 3120	1.80
102	4	110	81	HE 3122	2.25
108	4.1/4	120	88	HE 3124	2.80
114	4.1/2	130	92	HE 3126	3.60
127	5	140	97	HE 3128	3.80
127	5	140	97	HE 3128	3.30
133	5.1/4	150	111	HE 3130	5.50
140	5.1/2	160	119	HE 3132	7.30
152	6	170	122	HE 3134	7.55
165	6.1/2	180	131	HE 3136	9.50
171	6.3/4	190	141	HE 3136	10.20
178	7	200	150	HE 3140	12.30

10.2 Withdrawal Sleeve



Dimension			Number	Mass
d1	d	B		
mm	mm	mm		kg
45	50	50	AHX 2310	0.19
50	55	54	AHX 2311	0.26
55	60	58	AHX 2312	0.30
60	65	61	AHX-2313	0.36
65	70	64	AHX-2314	0.42
70	75	68	AHX 2315	0.53
75	80	71	AHX 2316	0.57
80	85	74	AHX 2317	0.65
85	90	79	AHX 2318	0.76
90	95	85	AHX 2319	0.90
95	100	90	AHX 2320	1.00
115	120	105	AHX 2324	1.55
125	130	115	AHX 2326	1.85
45	50	35	AHX 310	0.13
50	55	37	AHX 311	0.16
55	60	40	AHX 312	0.19
60	65	42	AHX 313	0.11
65	70	43	AHX 314	0.24
70	75	45	AHX 315	0.29
75	80	48	AHX 316	0.37
80	85	52	AHX 317	0.46
85	90	53	AHX 318	0.46
90	95	57	AHX 319	0.54
95	100	59	AHX 320	0.58
105	110	63	AHX 322	0.77
85	90	63	AHX 3218	0.57
95	100	73	AHX 3220	0.76
105	110	82	AHX 3222	1.00
115	120	90	AHX 3224	1.30
125	130	98	AHX 3226	1.50
135	140	104	AHX 3228	1.75
145	150	114	AHX 3230	2.20

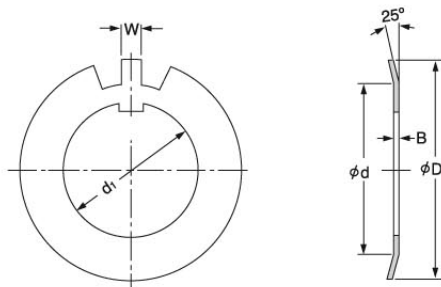
10.3 Lock Nuts



Nut with Washer

Dimension			Number	Mass
d1	d	B		
mm	mm	mm		kg
20	32	6	KM 4	0.02
25	38	7	KM 5	0.03
30	45	7	KM 6	0.04
35	52	8	KM 7	0.06
40	58	9	KM 8	0.08
45	65	10	KM 9	0.11
50	70	11	KM 10	0.14
55	75	11	KM 11	0.15
60	80	11	KM 12	0.16
65	85	12	KM 13	0.19
70	92	12	KM 14	0.22
75	98	13	KM 15	0.27
80	105	15	KM 16	0.36
85	110	16	KM 17	0.42
90	120	16	KM 18	0.51
95	125	17	KM 19	0.58
100	130	18	KM 20	0.68
105	140	18	KM 21	0.81
110	145	19	KM 22	0.89

10.4 Lock Washer



Straight-Tab

Dimension					Number	Mass
d1	d	D	B	W		
mm	mm	mm	mm	mm		kg
20	26	36	1.00	4	MB 4	0.01
25	32	42	1.25	5	MB 5	0.01
30	38	49	1.25	5	MB 6	0.01
35	44	57	1.25	6	MB 7	0.01
40	50	62	1.25	6	MB 8	0.01
45	56	69	1.25	6	MB 9	0.02
50	61	74	1.25	6	MB 10	0.02
55	67	81	1.50	8	MB 11	0.02
60	73	86	1.50	8	MB 12	0.02
65	79	92	1.50	8	MB 13	0.03
70	85	98	1.50	8	MB 14	0.03
75	90	104	1.50	8	MB 15	0.04
80	95	112	1.75	10	MB 16	0.05
85	102	119	1.75	10	MB 17	0.05
90	108	126	1.75	10	MB 18	0.06
95	113	133	1.75	10	MB 19	0.07
100	120	142	1.75	12	MB 20	0.08
105	126	145	1.75	12	MB 21	0.08
110	133	154	1.75	12	MB 22	0.09