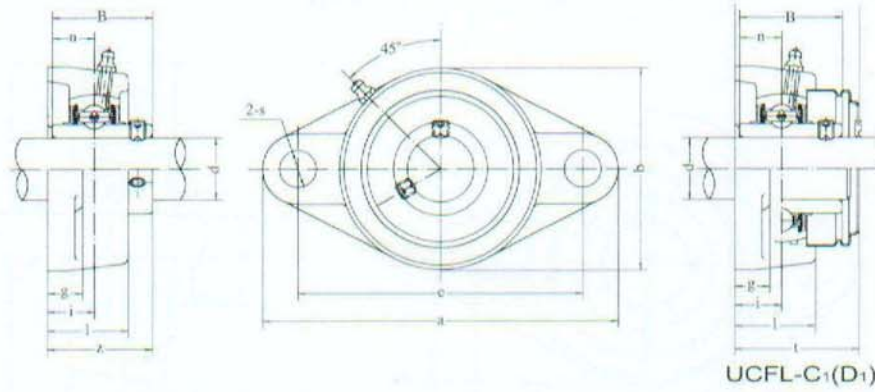
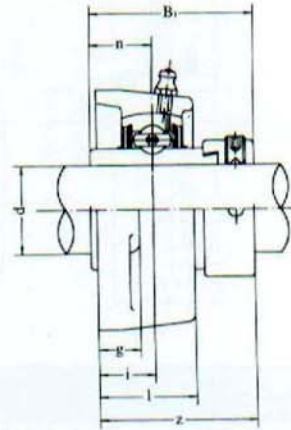
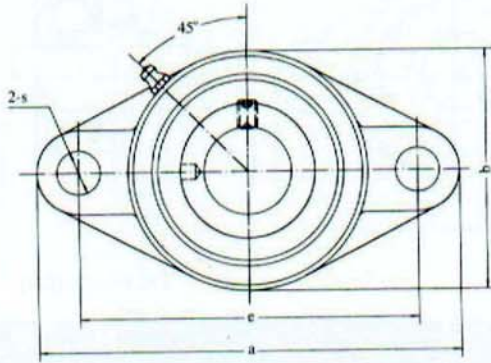


Flange Unit (Oval)

UCFL2 (Normal-duty)



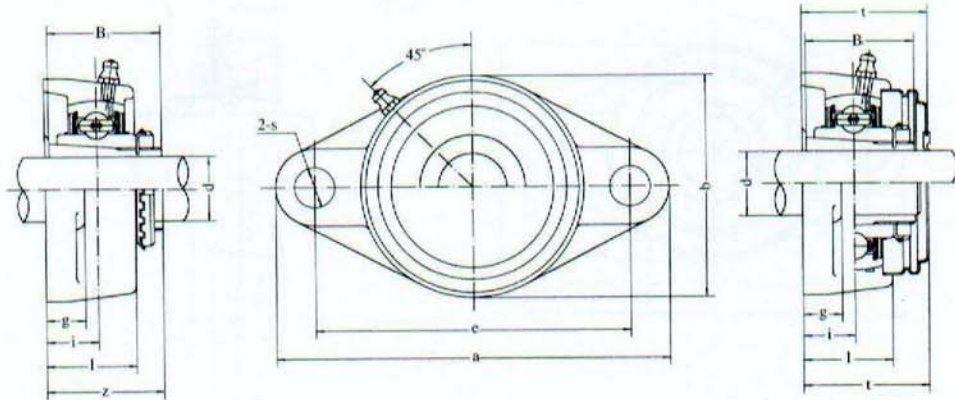
Unit No.	Dimensions mm												Bolt Size mm inch	Bearing No.	Housing No.	Weight (kg)
	d	a	e	l	g	l	S	b	z	l	B	n				
UCFL201	12	113	90	15	11	25.5	12	60	33.3	37.5	31	12.7	M10	UC201	FL204	0.45
UCFL201-8	1/2	4-7/16	3-35/64	19/32	7/16	1	15/32	2-3/8	1-5/16	1-31/64	1.2205	0.500	3/8	UC201-8		0.44
UCFL202	15	113	90	15	11	25.5	12	60	33.3	37.5	31	12.7	M10	UC202	FL204	0.44
UCFL202-9	9/16	4-7/16	3-35/64	19/32	7/16	1	15/32	2-3/8	1-5/16	1-31/64	1.2205	0.500	3/8	UC202-9		0.44
UCFL202-10	5/8	4-7/16	3-35/64	19/32	7/16	1	15/32	2-3/8	1-5/16	1-31/64	1.2205	0.500	3/8	UC202-10		0.44
UCFL203	17	113	90	15	11	25.5	12	60	33.3	37.5	31	12.7	M10	UC203	FL204	0.43
UCFL203-11	1 1/16	4-7/16	3-35/64	19/32	7/16	1	15/32	2-3/8	1-5/16	1-31/64	1.2205	0.500	3/8	UC203-11		0.42
UCFL204	20	113	90	15	11	25.5	12	60	33.3	37.5	31	12.7	M10	UC204	FL204	0.41
UCFL204-12	3/4	4-7/16	3-35/64	19/32	7/16	1	15/32	2-3/8	1-5/16	1-31/64	1.2205	0.500	3/8	UC204-12		0.41
UCFL205	25	130	99	16	13	27	16	66	35.8	40	34.1	14.3	M14	UC205	FL205	0.58
UCFL205-13	13/16	5-1/8	3-57/64	5/8	1/2	1-1/16	5/8	2-11/16	1-13/32	1-9/16	1.3425	0.563	1/2	UC205-13		0.62
UCFL205-14	7/8													UC205-14		0.61
UCFL205-15	15/16													UC205-15		0.59
UCFL205-16	1													UC205-16		0.58
UCFL206	30	148	117	18	13	31	16	80	40.2	44.5	38.1	15.9	M14	UC206	FL206	0.86
UCFL206-17	1-1/16	5-13/16	4-39/64	45/64	1/2	1-7/32	5/8	3-5/32	1-19/32	1-3/4	1.5000	0.626	1/2	UC206-17		0.89
UCFL206-18	1-1/8													UC206-18		0.88
UCFL206-19	1-3/16													UC206-19		0.86
UCFL206-20	1-1/4													UC206-20		0.85
UCFL207	35	161	130	19	14	34	16	90	44.4	48.5	42.9	17.5	M14	UC207	FL207	1.08
UCFL207-20	1-1/4	6-11/32	5-1/8	3/4	35/64	1-13/32	5/8	3-35/64	1-3/4	1-29/32	1.6890	0.689	1/2	UC207-20		1.14
UCFL207-21	1-5/16													UC207-21		1.11
UCFL207-22	1-3/8													UC207-22		1.08
UCFL207-23	1-7/16													UC207-23		1.05
UCFL208	40	175	144	21	14	36	16	100	51.2	55.5	49.2	19	M14	UC208	FL208	1.44
UCFL208-24	1-1/2	6-7/8	5-43/64	53/64	35/64	1-13/32	5/8	3-15/16	2-1/64	2-3/16	1.9370	0.748	1/2	UC208-24		1.48
UCFL208-25	1-9/16													UC208-25		1.45
UCFL209	45	188	148	22	15	38	19	108	52.2	56.5	49.2	19	M16	UC209	FL209	1.74
UCFL209-26	1-5/8	7-13/32	5-53/64	55/64	19/32	1-1/2	3/4	4-1/4	2-1/16	2-7/32	1.9370	0.748	5/8	UC209-26		1.84
UCFL209-27	1-11/16													UC209-27		1.80
UCFL209-28	1-3/4													UC209-28		1.76
UCFL210	50	197	157	22	15	40	19	115	54.6	59.5	51.6	19	M16	UC210	FL210	2.10
UCFL210-29	1-13/16	7-3/4	6-3/16	55/64	19/32	1-37/64	3/4	4-17/32	2-5/32	2-11/32	2.0315	0.748	5/8	UC210-29		2.22
UCFL210-30	1-7/8													UC210-30		2.17
UCFL210-31	1-15/16													UC210-31		2.12
UCFL210-32	2													UC210-32		2.08
UCFL211	55	224	184	25	18	43	19	130	58.4	63	55.6	22.2	M16	UC211	FL211	2.91
UCFL211-32	2	8-13/16	7-1/4	63/64	23/32	1-11/16	3/4	5-1/8	2-5/16	2-15/32	2.1890	0.874	5/8	UC211-32		3.06
UCFL211-33	2-1/16													UC211-33		3.00
UCFL211-34	2-1/8													UC211-34		2.95
UCFL211-35	2-3/16													UC211-35		2.89
UCFL212	60	250	202	29	18	48	23	140	68.7	73.5	65.1	25.4	M20	UC212	FL212	3.74
UCFL212-36	2-1/4	9-27/32	7-61/64	1-9/64	23/32	1-7/8	29/32	5-1/2	2-23/32	2-57/64	2.5630	1.000	3/4	UC212-36		3.87
UCFL212-37	2-5/16													UC212-37		3.79
UCFL212-38	2-3/8													UC212-38		3.72
UCFL212-39	2-7/16													UC212-39		3.65
UCFL213	65	258	210	30	22	50	23	155	69.7	74.5	65.1	25.4	M20	UC213	FL213	4.57
UCFL213-40	2-1/2	10-5/32	8-17/64	1-3/16	7/8	1-31/32	29/32	6-3/32	2-3/4	2-15/16	2.5630	1.000	3/4	UC213-40		4.66
UCFL213-41	2-9/16													UC213-41		4.57
UCFL214	70	265	216	31	22	54	23	160	75.4		74.6	30.2	M20	UC214	FL214	5.11
UCFL214-42	2-5/8	10-7/16	8-1/2	1-7/32	7/8	2-1/8	29/32	6-5/16	2-31/32		2.9370	1.189	3/4	UC214-42		5.32
UCFL214-43	2-11/16													UC214-43		5.22
UCFL214-44	2-3/4													UC214-44		5.12
UCFL215	75	275	225	34	22	56	23	165	78.5		77.8	33.3	M20	UC215	FL215	5.37
UCFL215-45	2-13/16	10-13/16	8-55/64	1-11/32	7/8	2-7/32	29/32	6-1/2	3-3/32		3.0630	1.311	3/4	UC215-45		5.62
UCFL215-46	2-7/8													UC215-46		5.51
UCFL215-47	2-15/16													UC215-47		5.40
UCFL215-48	3													UC215-48		5.28
UCFL216	80	290	233	34	22	58	25	180	83.3		82.6	33.3	M22	UC216	FL216	7.20
UCFL216-49	3-1/16	11-13/32	9-11/64	1-11/32	7/8	2-9/32	63/64	7-3/32	3-9/32		3.2520	1.311	7/8	UC216-49		7.38
UCFL216-50	3-1/8													UC216-50		7.25
UCFL216-51	3-1/16													UC216-51		7.12
UCFL217	85	305	248	36	24	63	25	190	87.6		85.7	34.1	M22	UC217	FL217	8.61
UCFL217-52	3-1/4	12	9-49/64	1-27/64	15/16	2-15/32	63/64	7-15/32	3-7/16		3.3740	1.343	7/8	UC217-52		8.83
UCFL217-53	3-5/16													UC217-53		8.69
UCFL217-55	3-7/16													UC217-55		8.40
UCFL218	90	320	265	40	24	68	25	205	96.3		96	39.7	M22	UC218	FL218	10.51
UCFL218-56	3-1/2	12-19/32	10-7/16	1-37/64	15/16	2-11/16	63/64	8-1/16	3-25/32		3.7795	1.5630	7/8	UC218-56		10.62



Unit No.	Dimensions											Bolt Size mm inch	Bearing No.	Housing No.	Weight (kg)
	d	a	e	i	g	l	s	b	z	B	n				
HCFL204	20	113	90	15	11	25.5	12	60	41.6	43.7	17.1	M10	HC204	FL204	0.48
HCFL204-12	3/4	4-7/16	3-35/64	19/32	7/16	1	15/32	2-3/8	1-41/64	1.720	0.673	3/8	HC204-12		0.48
HCFL205	25	130	99	16	13	27	16	68	42.9	44.4	17.5	M14	HC205	FL205	0.65
HCFL205-13	13/16												HC205-13		0.70
HCFL205-14	7/8	5-1/8	3-57/64	5/8	1/2	1-1/16	5/8	2-11/16	1-11/16	1.748	0.689	1/2	HC205-14		0.69
HCFL205-15	15/16												HC205-15		0.67
HCFL205-16	1												HC205-16		0.65
HCFL206	30	148	117	18	13	31	16	80	48.1	48.4	18.3	M14	HC206	FL206	0.99
HCFL206-17	1-1/16												HC206-17		1.04
HCFL206-18	1-3/8	5-13/16	4-39/64	45/64	1/2	1-7/32	5/8	3-5/32	1-57/64	1.906	0.720	1/2	HC206-18		1.01
HCFL206-19	1-3/16												HC206-19		0.99
HCFL206-20	1-1/4												HC206-20		0.96
HCFL207	35	161	130	19	14	34	16	90	51.3	51.1	18.8	M14	HC207	FL207	1.20
HCFL207-20	1-1/4												HC207-20		1.27
HCFL207-21	1-5/16	6-11/32	5-1/8	3/4	35/64	1-11/32	5/8	3-35/64	2-1/64	2.012	0.740	1/2	HC207-21		1.23
HCFL207-22	1-3/8												HC207-22		1.20
HCFL207-23	1-7/16												HC208-23		1.17
HCFL208	40	175	144	21	14	36	16	100	55.9	56.3	21.4	M14	HC208	FL208	1.59
HCFL208-24	1-1/2	6-7/8	5-43/64	53/64	35/64	1-13/32	5/8	3-15/16	2-13/64	2.217	0.843	1/2	HC208-24		1.64
HCFL208-25	1-9/16												HC208-25		1.60
HCFL209	45	188	148	22	15	38	19	108	56.9	56.3	21.4	M16	HC209	FL209	1.91
HCFL209-26	1-5/8												HC209-26		2.02
HCFL209-27	1-11/16	7-13/32	5-53/64	55/64	19/32	1-1/2	3/4	4-1/4	2-15/64	2.217	0.843	5/8	HC209-27		1.97
HCFL209-28	1-3/4												HC209-28		1.93
HCFL210	50	197	157	22	15	40	19	115	60.1	62.7	24.6	M16	HC210		FL210
HCFL210-29	1-13/16												HC210-29	2.44	
HCFL210-30	1-7/8	7-3/4	6-3/16	55/64	19/32	1-37/64	3/4	4-17/32	2-23/64	2.469	0.969	5/8	HC210-30	2.38	
HCFL210-31	1-15/16												HC210-31	2.32	
HCFL210-32	2												HC210-32	2.26	
HCFL211	55	224	184	25	18	43	19	130	68.6	71.4	27.8	M16	HC211	FL211	3.12
HCFL211-32	2												HC211-32		3.32
HCFL211-33	2-1/16	8-13/16	7-1/4	63/64	23/32	1-11/16	3/4	5-1/8	2-45/64	2.811	1.094	5/8	HC211-33		3.24
HCFL211-34	2-1/8												HC211-34		3.17
HCFL211-35	2-3/16												HC211-35		3.09
HCFL212	60	250	202	29	18	48	23	140	75.8	77.8	31	M20	HC212	FL212	4.08
HCFL212-36	2-4/1												HC212-36		4.24
HCFL212-37	2-5/16	9-27/32	7-61/64	1-9/64	23/32	1-7/8	29/32	5-1/2	2-63/64	3.063	1.220	3/4	HC212-37		4.15
HCFL212-38	2-3/8												HC212-38		4.10
HCFL212-39	2-7/16												HC212-39		3.97
HCFL213	65	258	210	30	22	50	23	155	81.6	85.7	34.1	M20	HC213	FL213	5.13
HCFL213-40	2-1/2	10-5/32	8-17/64	1-3/16	7/8	1-31/32	29/32	6-3/32	3-7/32	3.374	1.343	3/4	HC213-40		5.23
HCFL213-41	2-9/16												HC213-41		5.12
HCFL214	70	265	216	31	22	54	23	160	82.6	85.7	34.1	M20	HC214	FL214	5.61
HCFL214-42	2-3/8												HC214-42		5.85
HCFL214-43	2-11/16	10-7/16	8-1/2	1-7/32	7/8	2-1/8	29/32	6-5/16	3-1/4	3.374	1.343	3/4	HC214-43		5.74
HCFL214-44	2-3/4												HC214-44		5.62
HCFL215	75	275	225	34	22	56	23	165	88.8	92.1	37.3	M20	HC215	FL215	6.00
HCFL215-45	2-13/16												HC215-45		6.30
HCFL215-46	2-7/8	10-13/16	8-55/64	1-11/32	7/8	2-7/32	29/32	6-1/2	3-1/2	3.626	1.426	3/4	HC215-46		6.17
HCFL215-47	2-15/16												HC215-47		6.04
HCFL215-48	3												HC215-48		5.90

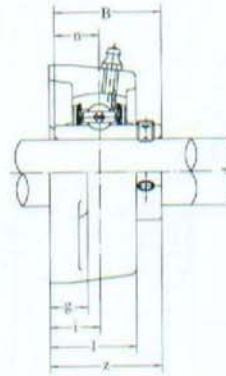
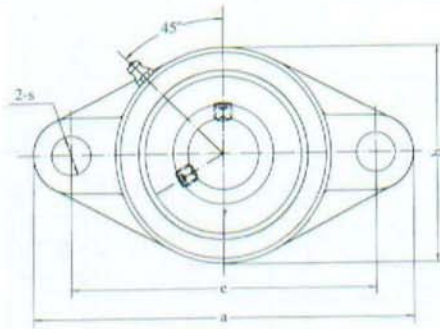
Flange Units (Oval)
(with adapter mounted)

UKFL2 (Normal duty)



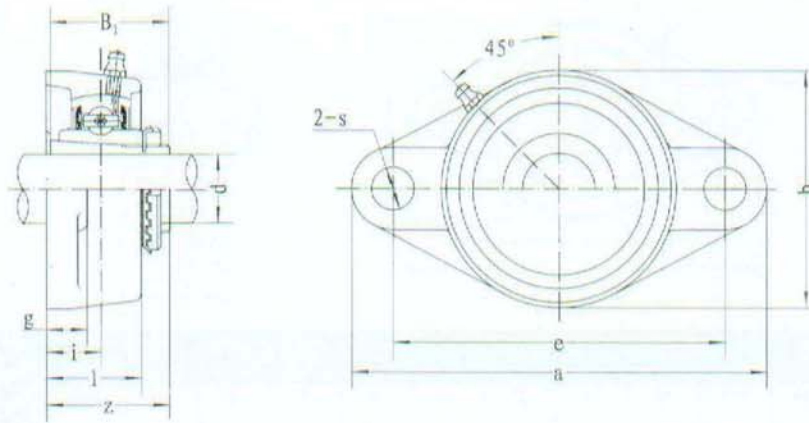
UKFL-C₁(D₁)

Unit No.	Dimensions											Bearing Size mm Inch	Bearing No.	Housing No.	Weight (kg)
	d	a	e	i	g	l	s	b	z	t	B ₁				
UKFL205;H2305	20	130	99	16	13	27	16	68	35.5	40	35	M14	UK205;H2305	FL205	0.63
UKFL205;HE2305	3/4	5-1/8	3-57/64	5/8	1/2	1-1/16	5/8	2-11/16	1-25/64	1-9/16	1.378	1/2	UK205;HE2305		
UKFL206;H2306	25	148	117	18	13	31	16	80	39	44.5	38	M14	UK206;H2306	FL206	0.90
UKFL206;HS2306	7/8	5-13/16	4-39/64	45/64	1/2	1-7/32	5/8	3-5/32	1-17/32	1-3/4	1.496	1/2	UK206;HS2306		
UKFL206;HE2306	1												UK206;HE2306		
UKFL207;H2307	30	161	130	19	14	34	16	90	42.5	48.5	43	M14	UK207;H2307	FL207	1.17
UKFL207;HS2307	1-1/8	6-11/32	5-1/8	3/4	35/64	1-11/32	5/8	3-35/64	1-43/64	1-29/32	1.693	1/2	UK207;HS2307		
UKFL208;H2308	35	175	144	21	14	36	16	100	46.5	55.5	46	M14	UK208;H2308	FL208	1.54
UKFL208;HE2308	1-1/4	6-7/8	5-43/64	53/64	35/64	1-13/32	5/8	3-15/16	1-53/64	2-3/16	1.811	1/2	UK208;HE2308		
UKFL208;HS2308	1-3/8												UK209;H2309		
UKFL209;H2309	40	188	148	22	15	38	19	108	48.5	56.5	50	M16	UK209;HA2309	FL209	1.89
UKFL209;HA2309	1-7/16												UK209;HE2309		
UKFL209;HE2309	1-1/2	7-13/32	5-53/64	55/64	19/32	1-1/2	3/4	4-1/4	1-29/32	2-7/32	1.969	5/8	UK209;HS2309		
UKFL209;HS2309	1-5/8												UK210;H2310		
UKFL210;H2310	45	197	157	22	15	40	19	115	50	59.5	55	M16	UK210;H2310	FL210	2.27
UKFL210;HS2310	1-5/8												UK210;HA2310		
UKFL210;HA2310	1-11/16	7-3/4	6-3/16	55/64	19/32	1-37/64	3/4	4-17/32	1-31/32	2-11/32	2.165	5/8	UK210;HE2310		
UKFL210;HE2310	1-3/4														
UKFL211;H2311	50	224	184	25	18	43	19	130	54.5	63	59	M16	UK211;H2311	FL211	3.06
UKFL211;HS2311	1-7/8												UK211;HS2311		
UKFL211;HA2311	1-15/16	8-13/16	7-1/4	63/64	23/32	1-11/16	3/4	5-1/8	2-9/64	2-15/32	2.323	5/8	UK211;HA2311		
UKFL211;HE2311	2												UK211;HE2311		
UKFL212;H2312	55	250	202	29	18	48	23	140	61	73.5	62	M20	UK212;H2312	FL212	3.79
UKFL212;HS2312	2-1/8	9-27/32	7-61/64	1-9/64	23/32	1-7/8	29/32	5-1/2	2-13/32	2-57/64	2.441	3/4	UK212;HS2312		
UKFL213;H2313	60	258	210	30	22	50	23	155	64	74.5	65	M20	UK213;H2313	FL213	4.48
UKFL213;HA2313	2-3/16												UK213;HA2313		
UKFL213;HE2313	2-1/4	10-5/32	8-17/64	1-3/16	7/8	1-31/32	29/32	6-3/32	2-33/64	2-15/16	2.559	3/4	UK213;HE2313		
UKFL213;HS2313	2-3/8												UK213;HS2313		
UKFL215;H2315	65	275	225	34	22	56	23	165	71		73	M20	UK215;H2315	FL215	5.48
UKFL215;HA2315	2-7/16	10-13/16	8-55/64	1-11/32	7/8	2-7/32	29/32	6-1/2	2-51/64		2.874	3/4	UK215;HA2315		
UKFL215;HE2315	2-1/2												UK215;HE2315		
UKFL216;H2316	70	290	233	34	22	58	25	180	73.5		78	M22	UK216;H2316	FL216	7.46
UKFL216;HA2316	2-11/16	11-13/32	9-11/64	1-11/32	7/8	2-9/32	63/64	7-3/32	2-57/64		3.071	7/8	UK216;HA2316		
UKFL216;HE2316	2-3/4												UK216;HE2316		
UKFL217;H2317	75	305	248	36	24	63	25	190	77		82	M22	UK217;H2317	FL217	9.03
UKFL217;HA2317	2-15/16	12	9-49/64	1-27/64	15/16	2-15/32	63/64	7-15/32	3-1/32		3.228	7/8	UK217;HA2317		
UKFL217;HE2317	3												UK217;HE2317		
UKFL218;H2318	80	320	265	40	24	68	25	205	81.5		86	M22	UK218;H2318	FL218	10.89
UKFL218;HA2318	3-3/16	12-19/32	10-7/16	1-37/64	15/16	2-11/16	63/64	8-1/16	3-13/64		3.386	7/8	UK218;HA2318		

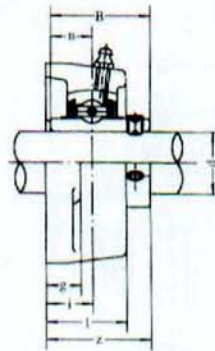
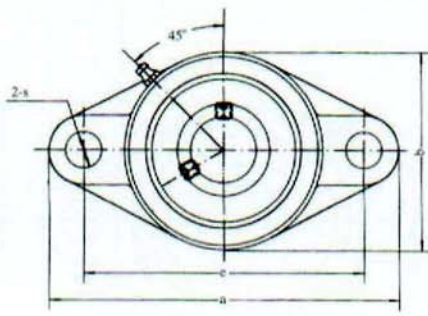


Unit No.	Dimensions ^{mm} in.											Bolt Size mm inch	Bearing No.	Housing No.	Weight (kg)
	d	a	e	i	g	h	s	b	z	B	n				
UCFLX05	25	141	117	18	13	30	12	83	40.2	38.1	15.9	M10	UCX05	FLX05	1.0
UCFLX05-13	13/16												UCX05-13		
UCFLX05-14	7/8	5-9/16	4-39/64	45/64	1/2	1-3/16	15/32	3-9/32	1-37/64	1.5000	0.626	3/8	UCX05-14		
UCFLX05-15	15/16												UCX05-15		
UCFLX05-16	1												UCX05-16		
UCFLX06	30	156	130	19	15	34	16	95	44.4	42.9	17.5	M14	UCX06	FLX06	1.5
UCFLX06-17	1-1/16												UCX06-17		
UCFLX06-18	1-1/8	6-5/32	5-1/8	3/4	19/32	1-11/32	5/8	3-3/4	1-3/4	1.6890	0.689	1/2	UCX06-18		
UCFLX06-19	1-3/16												UCX06-19		
UCFLX06-20	1-1/4												UCX06-20		
UCFLX07	35	171	144	21	16	38	16	105	51.2	49.2	19	M14	UCX07	FLX07	2.0
UCFLX07-21	1-5/16												UCX07-21		
UCFLX07-22	1-3/8	6-23/32	5-43/64	53/64	5/8	1-1/2	5/8	4-1/8	2-1/64	1.9370	0.748	1/2	UCX07-22		
UCFLX07-23	1-7/16												UCX07-23		
UCFLX08	40	179	148	22	16	40	16	111	52.2	49.2	19	M14	UCX08	FLX08	2.2
UCFLX08-24	1-1/2	7-1/16	5-53/64	55/64	5/8	1-9/16	5/8	4-3/8	2-1/16	1.9370	0.748	1/2	UCX08-24		
UCFLX08-25	1-9/16												UCX08-25		
UCFLX09	45	189	157	23	16	40	16	116	55.6	51.6	19	M14	UCX09	FLX09	2.4
UCFLX09-26	1-5/8												UCX09-26		
UCFLX09-27	1-11/16	7-7/16	6-3/10	29/32	5/8	1-37/64	5/8	4-9/16	2-3/16	2.0315	0.748	1/2	UCX09-27		
UCFLX09-28	1-3/4												UCX09-28		
UCFLX09-29	1-13/16												UCX09-29		
UCFLX10	50	216	184	26	18	44	19	133	59.4	55.6	22.2	M16	UCX10	FLX10	3.4
UCFLX10-30	1-7/8												UCX10-30		
UCFLX10-31	1-15/16	8-1/2	7-1/4	1-1/32	23/32	1-23/32	3/4	5-1/4	2-11/32	2.1890	0.874	5/8	UCX10-31		
UCFLX10-32	2												UCX11-32		

Flange Units(Oval)
(with adapter mounted)



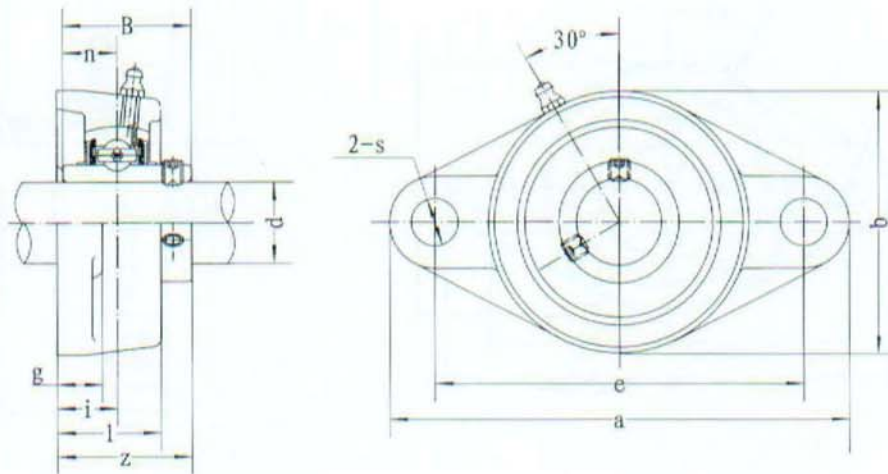
Unit No.	Dimensions <small>mm in.</small>											Bolt Used mm	Bearing NO.	Housing NO.	Weight (kg)
	d	a	e	l	g	l	s	b	z	B ₁					
UKFLX05:H2305	20	141	117	18	13	30	12	83	39	35	M10	UKX05:H2305	FLX05	1.0	
UKFLX05:HE2305	3/4	5-9/16	4-39/64	45/64	1/2	1-3/16	15/32	3-9/32	1-17/32	1.378	3/8	UKX05:HE2305			
UKFLX06:H2306	25	156	130	19	15	34	16	95	41.5	38	M14	UKX06:H2306	FLX06	1.5	
UKFLX06:HS2306	7/8	6-5/32	5-1/8	3/4	19/32	1-11/32	5/8	3-3/4	1-41/64	1.496	1/2	UKX06:HS2306	FLX07	1.8	
UKFLX06:HE2306	1											UKX06:HE2306			
UKFLX07:H2307	30	171	144	21	16	38	16	105	45.5	43	M14	UKX07:H2307	FLX08	2.1	
UKFLX07:HS2307	1-1/8	6-23/32	5-43/64	53/64	5/8	1-1/2	5/8	4-1/8	1-51/64	1.693	1/2	UKX07:HS2307			
UKFLX08:H2308	35	179	148	22	16	40	16	111	47.5	46	M14	UKX08:H2308	FLX09	2.5	
UKFLX08:HE2308	1-1/4	7-1/16	5-53/64	55/64	5/8	1-9/16	5/8	4-3/8	1-7/8	1.811	1/2	UKX08:HE2308			
UKFLX08:HS2308	1-3/8											UKX08:HS2308			
UKFLX09:H2309	40	189	157	23	16	40	16	116	50	50	M14	UKX09:H2309	FLX10	3.7	
UKFLX09:HA2309	1-7/16											UKX09:HA2309			
UKFLX09:HE2309	1-1/2	7-7/16	6-3/16	29/32	5/8	1-37/64	5/8	4-9/16	1-31/32	1.969	1/2	UKX09:HE2309			
UKFLX09:HS2309	1-5/8											UKX09:HS2309			
UKFLX10:H2310	45	216	184	26	18	44	19	133	55.5	55	M16	UKX10:H2310			
UKFLX10:HS2310	1-5/8											UKX10:HS2310			
UKFLX10:HA2310	1-11/16	8-1/2	7-1/4	1-1/32	23/32	1-23/32	3/4	5-1/4	2-3/16	2.165	5/8	UKX10:HA2310			
UKFLX10:HE2310	1-3/4											UKX10:HE2310			



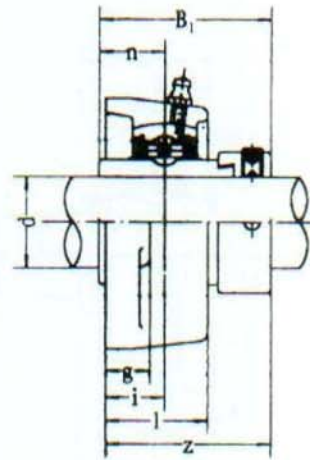
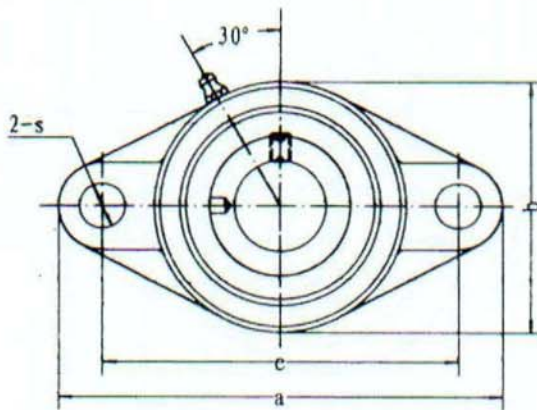
Unit No.	Dimensions <small>mm inch</small>												Bolt Size <small>mm inch</small>	Bearing No.	Housing No.	Weight (kg)
	d	a	e	l	g	i	s	b	z	B	n					
UCFL305 UCFL305-13 UCFL305-14 UCFL305-15 UCFL305-16	25 13/16 7/8 15/16 1	150	113	16	13	29	19	80	39	38	15	M16	UCFL305 UCFL305-13 UCFL305-14 UCFL305-15 UCFL305-16	FL305	1.1	
UCFL306 UCFL306-17 UCFL306-18 UCFL306-19	30 1-1/8 1-1/8 1-3/16	180	134	18	15	32	23	90	44	43	17	M20	UCFL306 UCFL306-17 UCFL306-18 UCFL306-19	FL306	1.5	
UCFL307 UCFL307-20 UCFL307-21 UCFL307-22 UCFL307-23	35 1-1/4 1-5/16 1-3/8 1-7/16	185	141	20	16	36	23	100	49	48	19	M20	UCFL307 UCFL307-20 UCFL307-21 UCFL307-22 UCFL307-23	FL307	1.9	
UCFL308 UCFL308-24 UCFL308-25	40 1-1/2 1-9/16	200	158	23	17	40	23	112	56	52	19	M20	UCFL308 UCFL308-24 UCFL308-25	FL308	2.5	
UCFL309 UCFL309-26 UCFL309-27 UCFL309-28	45 1-5/8 1-11/16 1-3/4	230	177	25	18	44	25	125	60	57	22	M22	UCFL309 UCFL309-26 UCFL309-27 UCFL309-28	FL309	3.4	
UCFL310 UCFL310-29 UCFL310-30 UCFL310-31	50 1-13/16 1-7/8 1-15/16	240	187	28	19	48	25	140	67	61	22	M22	UCFL310 UCFL310-29 UCFL310-30 UCFL310-31	FL310	4.4	
UCFL311 UCFL311-32 UCFL311-33 UCFL311-34 UCFL311-35	55 2 2-1/16 2-1/8 2-3/16	250	198	30	20	52	25	150	71	66	25	M22	UCFL311 UCFL311-32 UCFL311-33 UCFL311-34 UCFL311-35	FL311	5.1	
UCFL312 UCFL312-36 UCFL312-37 UCFL312-38 UCFL312-39	60 2-1/4 2-5/16 2-3/8 2-7/16	270	212	33	22	56	31	160	78	71	26	M27	UCFL312 UCFL312-36 UCFL312-37 UCFL312-38 UCFL312-39	FL312	6.1	
UCFL313 UCFL313-40 UCFL313-41	65 2-1/2 2-9/16	295	240	33	25	58	31	175	78	75	30	M27	UCFL313 UCFL313-40 UCFL313-41	FL313	7.8	
UCFL314 UCFL314-42 UCFL314-43 UCFL314-44	70 2-5/8 2-11/16 2-3/4	315	250	36	28	61	35	185	81	78	33	M20	UCFL314 UCFL314-42 UCFL314-43 UCFL314-44	FL314	9.0	
UCFL315 UCFL315-45 UCFL315-46 UCFL315-47 UCFL315-48	75 2-13/16 2-7/8 2-15/16 3	320	260	39	30	66	35	195	89	82	32	M30	UCFL315 UCFL315-45 UCFL315-46 UCFL315-47 UCFL315-48	FL315	10	
UCFL316 UCFL316-49 UCFL316-50 UCFL316-51	80 3-1/16 3-1/8 3-3/16	355	285	38	32	68	38	210	90	86	34	M33	UCFL316 UCFL316-49 UCFL316-50 UCFL316-51	FL316	13	
UCFL317 UCFL317-52 UCFL317-53 UCFL317-55	85 3-1/4 3-5/16 3-7/16	370	300	44	32	74	38	220	100	96	40	M33	UCFL317 UCFL317-52 UCFL317-53 UCFL317-55	FL317	15	
UCFL318 UCFL318-55 UCFL318-56	90 3-7/16 3-1/2	385	315	44	36	76	38	235	100	96	40	M33	UCFL318 UCFL318-55 UCFL318-56	FL318	18	
UCFL319 UCFL319-58 UCFL319-59 UCFL319-60	95 3-5/8 3-11/16 3-3/4	405	330	59	40	94	41	250	121	103	41	M36	UCFL319 UCFL319-58 UCFL319-59 UCFL319-60	FL319	22	
UCFL320 UCFL320-64	100 4	440	360	59	40	94	44	270	125	108	42	M39	UC320 UC320-64	FL320	27	
UCFL322	110	470	390	60	42	96	44	300	131	117	46	M39	UC322	FL322	33	
UCFL324	120	520	430	65	48	110	47	330	140	126	51	M42	UC324	FL324	48	
UCFL326	130	550	460	65	50	115	47	360	146	135	54	M42	UC326	FL326	58	
UCFL328	140	600	500	75	60	125	51	400	161	145	59	M45	UC328	FL328	81	

Flange Units(Oval)

UCFT2 (Normal-duty)



Unit No.	Dimensions											Bolt Size mm inch	Bearing No.	Housing No.	Weight (kg)
	d	a	e	l	g	l	s	b	z	B	n				
UCFT204	20	112	89.5	19	11	29	10.5	60	33.3	31	12.7	M8	UC204	FT204	0.45
UCFT204-12	3/4	4-13/32	3-33/64	3/4	7/16	1-9/64	27/64	2-3/8	1-5/16	1.2205	0.500	5/16	UC204-12		
UCFT205	25	124	99	20	13	31	13	70	35.8	34.1	14.6	M10	UC205	FT205	0.64
UCFT205-13	13/16												UC205-13		
UCFT205-14	7/8	4-7/8	3-57/64	25/32	1/2	1-7/32	33-64	2-3/4	1-13/32	1.3425	0.563	3/8	UC205-14		
UCFT205-15	15/16												UC205-15		
UCFT205-16	1												UC205-16		
UCFT206	30	141	116.5	21	13	34	13	82	40.2	38.1	15.9	M10	UC206	FT206	0.91
UCFT206-17	1-1/16												UC206-17		
UCFT206-18	1-1/8	5-35/64	4-37/64	53/64	1/2	1-11/32	33/64	3-15/64	1-19/32	1.5000	0.626	3/8	UC206-18		
UCFT206-19	1-3/16												UC206-19		
UCFT206-20	1-1/4												UC206-20		
UCFT207	35	165	130	21.5	14	36.5	14	95	44.4	42.9	17.5	M12	UC207	FT207	1.28
UCFT207-20	1-1/4												UC207-20		
UCFT207-21	1-5/16	6-9/64	5-1/8	27/32	35/64	1-7/16	35/64	3-47/64	1-3/4	1.6890	0.689	7/16	UC207-21		
UCFT207-22	1-3/8												UC207-22		
UCFT207-23	1-7/16												UC207-23		
UCFT208	40	171	143.5	24	14	39	14	105	51.2	49.2	19	M12	UC208	FT208	1.64
UCFT208-24	1-1/2												UC208-24		
UCFT208-25	1-9/16	6-47/64	5-21/32	61/64	35/64	1-17/32	35/64	4-9/64	2-1/64	1.9370	0.748	7/16	UC208-25		
UCFT209	45	179	148.5	24	14	40	16	111	52.2	49.2	19	M14	UC209	FT209	1.88
UCFT209-26	1-5/8												UC209-26		
UCFT209-27	1-11/16	7-3/64	5-55/64	61/64	35/64	1-37/64	5/8	4-3/8	2-1/16	1.9370	0.748	1/2	UC209-27		
UCFT209-28	1-3/4												UC209-28		
UCFT210	50	189	157	28.5	14	47	16	116	54.6	51.6	19	M14	UC210	FT210	2.18
UCFT210-29	1-13/16												UC210-29		
UCFT210-30	1-7/8	7-7/16	6-3/16	1-1/8	35/64	1-27/32	5/8	4-9/16	2-5/32	2.0315	0.748	1/2	UC210-30		
UCFT210-31	1-15/16												UC210-31		
UCFT210-32	2												UC210-32		
UCFT211	55	216	184	32	20	50	18	133	58.4	55.6	22.2	M16	UC211	FT211	3.25
UCFT211-32	2												UC211-32		
UCFT211-33	2-1/16	8-1/2	7-1/4	1-17/64	25/32	1-31/32	45/64	5-15/64	2-5/16	2.1890	0.874	5/8	UC211-33		
UCFT211-34	2-1/8												UC211-34		
UCFT211-35	2-3/16												UC211-35		



Unit No.	Dimensions											Bolt Size mm inch	Bearing No.	Housing No.	Weight (kg)
	d	a	e	l	g	l	s	b	z	B ₁	n				
HCFT204 HCFT204-12	20 3/4	112 4-13/32	89.5 3-33/64	19 3/4	11 7/16	29 1-9/64	10.5 27/64	60 2-3/8	41.6 1-41/64	43.7 1.720	17.1 0.673	M8 5/16	HC204 HC204-12	FT204	0.50
HCFT205 HCFT205-13 HCFT205-14 HCFT205-15 HCFT205-16	25 13/16 7/8 15/16 1	124 4-7/8	99 3-57/64	20 25/32	13 1/2	31 1-7/32	13 33-64	70 2-3/4	42.9 1-11/16	44.4 1.748	17.5 0.689	M10 3/8	HC205 HC205-13 HC205-14 HC205-15 HC205-16	FT205	0.69
HCFT206 HCFT206-17 HCFT206-18 HCFT206-19 HCFT206-20	30 1-1/16 1-1/8 1-3/16 1-1/4	141 5-35/64	116.5 4-37/64	21 53/64	13 1/2	34 1-11/32	13 33/64	82 3-15/64	48.1 1-57/64	48.4 1.906	18.3 0.720	M10 3/8	HC206 HC206-17 HC206-18 HC206-19 HC206-20	FT206	0.98
HCFT207 HCFT207-20 HCFT207-21 HCFT207-22 HCFT207-23	35 1-1/4 1-5/16 1-3/8 1-7/16	165 6-9/64	130 5-1/8	21.5 27/32	14 35/64	36.5 1-7/16	14 35/64	95 3-47/64	51.3 12-1/64	51.1 2.012	18.8 0.740	M12 7/16	HC207 HC207-20 HC207-21 HC207-22 HC207-23	FT207	1.41
HCFT208 HCFT208-24 HCFT208-25	40 1-1/2 1-9/16	171 6-47/64	143.5 5-21/32	24 61/64	14 35/64	39 1-17/32	14 35/64	105 4-9/64	55.9 2-13/64	56.3 2.217	21.4 0.843	M12 7/16	HC208 HC208-24 HC208-25	FT208	1.77
HCFT209 HCFT209-26 HCFT209-27 HCFT209-28	45 1-5/8 1-11/16 1-3/4	179 7-3/64	148.5 5-55/64	24 61/64	14 35/64	40 1-37/64	16 5/8	111 4-3/8	56.9 2-15/64	56.3 2.217	21.4 0.843	M14 1/2	HC209 HC209-26 HC209-27 HC209-28	FT209	2.00
HCFT210 HCFT210-29 HCFT210-30 HCFT210-31 HCFT210-32	50 1-13/16 1-7/8 1-15/16 2	189 7-7/16	157 6-3/16	28.5 1-1/8	14 35/64	47 1-27/32	16 5/8	116 4-9/16	60.1 2-23/64	62.7 2.469	24.6 0.969	M14 1/2	HC210 HC210-29 HC210-30 HC210-31 HC210-32	FT210	2.38
HCFT211 HCFT211-32 HCFT211-33 HCFT211-34 HCFT211-35	55 2 2-1/16 2-1/8 2-3/16	216 8-1/2	184 7-1/4	32 1-17/64	20 25/32	50 1-31/32	18 45/64	133 5-15/64	68.6 2-45/64	71.4 2.811	27.8 1.094	M16 5/8	HC211 HC211-32 HC211-33 HC211-34 HC211-35	FT211	3.52